

Agency Power

CAN-AM MAVERICK X3

HYDRAULIC HANDBRAKE KIT

PN: AP-BRP-X3-430



OVERVIEW

With this quick guide, you can add a hydraulic handbrake to your Can-Am Maverick X3. Handbrakes are not only be fun, but they can help position the X3 near the limit. We recommend this handbrake for experienced drivers only. This product is intended for off-road use only. We recommend checking all components for proper operation before install and use.



INSTALL DIFFICULTY



ESTIMATED INSTALL TIME

2-3hrs with brake bleeding

ADDITIONAL PARTS NEEDED

DOT4 Brake Fluid

REMOVAL

1. Remove the seats in the X3. We only removed the passenger side, but removing both sides makes for an easier installation.

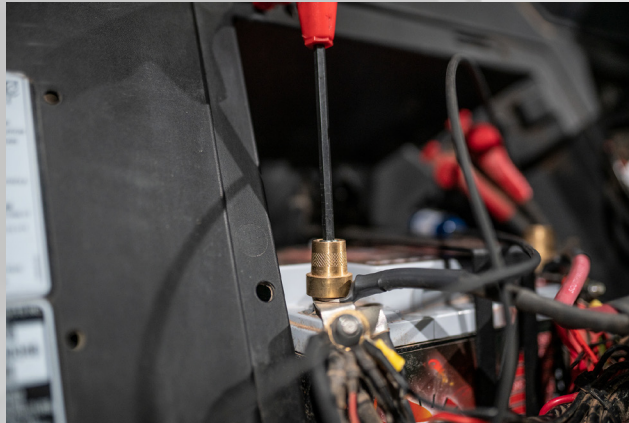


2. Unbolt the front of the seat from the support. Remove the seat bottom to gain access to the rear bolts. Unbolt the rear from the rear bulkhead.



REMOVAL

3. Disconnect the battery.

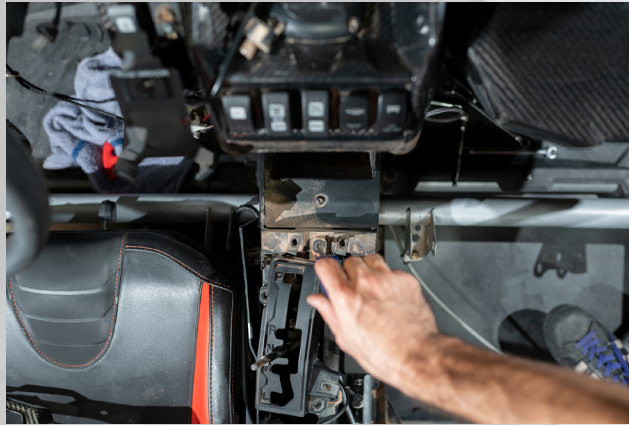


4. Removed passenger side grab handle grip. Remove the top and passenger side center console panels.

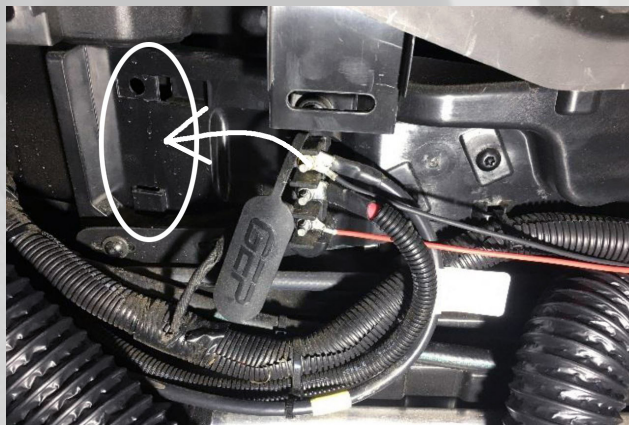


REMOVAL

5. Remove the factory shift gate. This will allow access to the upper mounting holes.



6. Relocate the power distribution block and clip towards the rear of the vehicle.



INSTALL

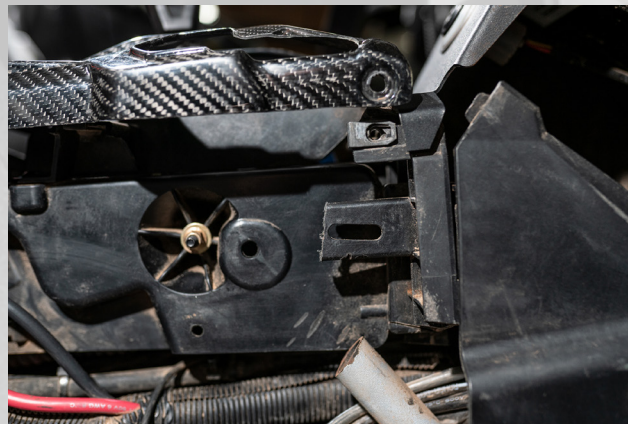
7. Cut the passenger grab handle. This should be 2-3" from the frame.

NOTE: Avoid damaging any brake lines, coolant lines, wiring, or panels.



8. Trim the interior plastic tab as shown and tuck the wiring harness below the remaining piece of the grab handle tube.

Note: When installing the bracket, route the harness and fuel lines behind the bracket to avoid damage



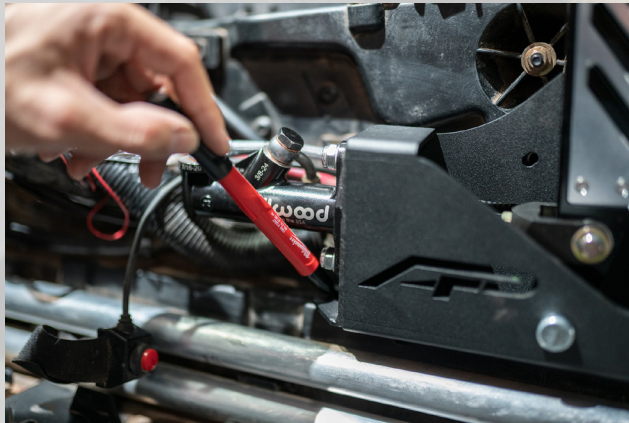
INSTALL

9. Install the handbrake into the grab handle tube. Line up the upper mounting holes with the side of the console. Install the M6 x 16mm bolts, large 1/4" ID 1" OD washers, and M6 Nyloc nuts through upper bracket mounting holes. The base should sit flat against the bottom of the console.



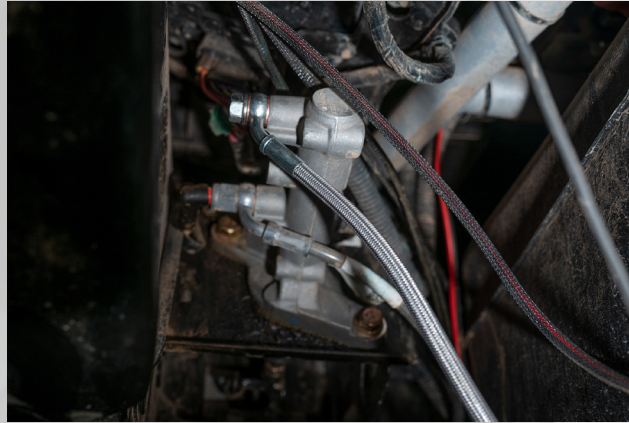
10. Mark where the handbrake base meets the console. Remove the handbrake and carefully drill 1/4" holes into the center console.

NOTE: Avoid fuel lines, coolant lines, and wiring harness.

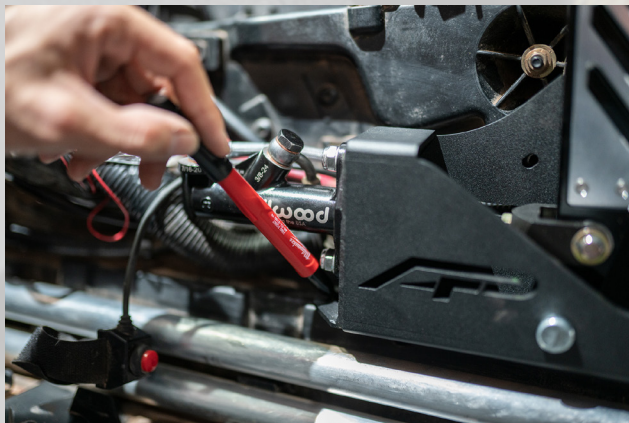


INSTALL

11. Disconnect the rear brake line from the master cylinder. (Farthest from the firewall) Connect the new stainless line to the master cylinder with new 10mm crush washers.

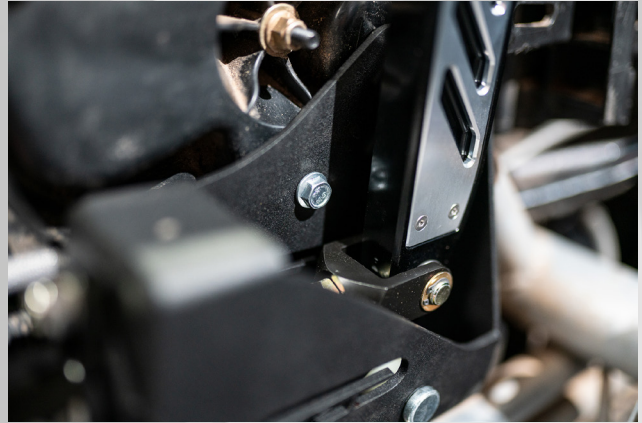


12. Route the brake line beneath the dash and to the other side. Route the brake line under the center console for the most clearance. Connect the line to the handbrake master cylinder, farthest port from the bracket using the 7/16-20 x 24mm banjo bolt. Connect the factory brake line to the second port, closest to the bracket using the 3/8-24 x 20mm banjo bolt.



INSTALL

13. Reinstall the handbrake assembly to the console. Line up the upper mounting holes with the side of the console. Install the M6 x 16mm bolts, large 1/4" ID 1" OD washers, and M6 Nyloc nuts through upper bracket mounting hole.



14. Install the M6 x 25mm bolts, small M6 washers, and M6 Nyloc nuts through the newly drilled lower mounting holes.



15. Recommended for additional stability: Drill a 1/4" hole through the factory grab bar tube and Agency Power front handbrake mount. Insert the M6 x 35mm bolt through the hole and secure with an M6 washer and Nyloc nut.

INSTALL

16. Fit the top Center console trim. Adjust the handbrake pushrod until the handbrake nearly touches the trimmed bracket. Ensure the handbrake has full range without interfering with the center console.



17. At this point we recommend bleeding the brakes. When bleeding the rear brakes, you may need to work the handbrake to work the air out of the system. Brakes should feel firm and like normal. Check for leaks in the system.



INSTALL

18. Additional handbrake adjustment may be necessary. Apply blue Locktite to the adjustment nut once the final location has been determined.



INSTALL

19. Reassemble the interior, connect the battery, and reinstall seats.



20. Enjoy sideways driving responsibly.